



ZENITH ENGINEERING
SERVICES

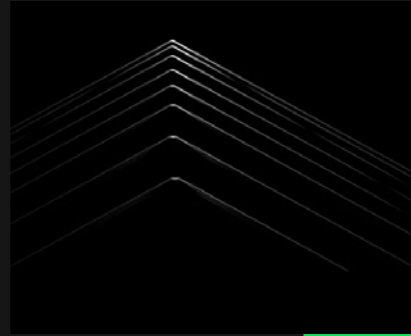
WHO

WE

ARE

ABOUT US

- ▶ Welcome to ZENITH, where we redefine the Landscape of Modern construction.
- ▶ At the Heart of our operation is a commitment to Innovation, Excellence, and the seamless integration of Technology with Traditional Construction Methodologies.
- ▶ Founded on the principles of integrity, quality, and sustainability, our company is your comprehensive Partner in constructing the future.



OUR MISSION

- ▶ Is to lead the construction industry towards a more innovative and sustainable future. We are dedicated to delivering exceptional quality and value to our clients, from the initial design phase through to construction and facility management.
- ▶ Our approach is holistic, ensuring that every project not only meets but exceeds client expectations while enhancing the end user's experience.
- ▶ **Community and Stakeholder Engagement:**
Building strong relationships with communities and stakeholders by promoting inclusivity, transparency, and collaboration.
- ▶ **Innovative Construction Excellence:**
Leading the future of the construction industry through innovative design, advanced technologies, and sustainable practices.
- ▶ **Unmatched Client Satisfaction:**
To be recognized as the premier Construction Company by consistently exceeding client expectations in quality, delivery, and service.
- ▶ **Global Standards, Local Impact:**
Adopting global best practices in construction while making a positive impact on local communities and economies.

OUR VISION

Encapsulates the Ambition to be at the Forefront of the Construction Sector, Incorporating Advanced Technologies, Modern Construction Aspects, and Sustainable practices to create not just buildings, but legacies.

- ▶ **We Strive to Achieve Unmatched Client Satisfaction by Deeply Understanding Their Needs and Aspirations, Ensuring Personalized and Comprehensive Service.**
- ▶ **Personalized Client Partnerships:**
Dedication to understanding each client's unique vision and requirements, ensuring personalized service and forging lifetime collaborations built on trust and mutual success.
- ▶ **Sustainable and Green Building:**
Commitment to environmental stewardship through sustainable construction practices, reducing carbon footprint, and enhancing green building standards.
- ▶ **Technological Integration:**
Leveraging cutting-edge technologies and digital innovation to improve efficiency, safety, and project outcomes.
- ▶ **Continuous Improvement and Learning:**
Fostering a culture of continuous improvement, learning, and development to stay at the forefront of the construction industry.



WHAT WE DO:

Our services Encompass all Stages of the Construction Process.

WE SPECIALIZE IN:

Innovative Design Solutions: Crafting bespoke designs that blend aesthetics with functionality.

▶ **Advanced Construction Methods:**

Utilizing state-of-the-art technologies and materials to ensure efficiency, safety, and superior quality.

▶ **Sustainable Practices:**

Committing to green building standards and environmental stewardship to minimize our ecological footprint.

▶ **Facility Management:**

Offering full-spectrum management services to ensure the longevity and performance of buildings post-construction.

▶ **Client-Centric Approach:**

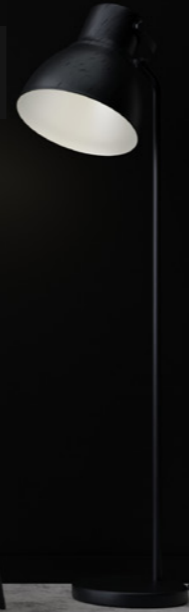
We believe in building not just projects but relationships. Our commitment to understanding and adapting to client needs sets us apart.

WHY CHOOSE US?

- ▶ With **ZENITH**, you're choosing a partner who values your vision as much as you do.
- ▶ Our team of experts brings together the best in design, technology, and management to deliver projects that stand the test of time.
- ▶ Our commitment to innovation, client satisfaction, and sustainability makes us not just a choice but the right choice for your project.
- ▶ Our Legacy is built on a foundation of trust, excellence, and visionary construction.
- ▶ We are more than builders.
- ▶ we are pioneers of modern construction, dedicated to creating spaces that inspire and endure.

JOIN US IN BUILDING THE FUTURE

INTERIOR DESIGN & ARCHITECTURAL



ZENITH'S Interior Design and Architectural Team Offers A Comprehensive Range of Services to Transform Your Space Into a Functional and Aesthetically Pleasing Environment. From Initial Concept Development to Construction Oversight, we Work Closely With You to Ensure Your Vision is Realized.

OUR EXPERTISE INCLUDES:

▶ SPACE PLANNING AND LAYOUT:

We Analyze Your Needs and Develop a Layout That Optimizes Space Utilization and Workflow.

▶ MATERIAL SELECTION AND FINISHES:

We Help You Choose Materials and Finishes That Reflect Your style and budget.

▶ FURNITURE AND EQUIPMENT SELECTION:

We source Furniture and Equipment That is Both Functional and Aesthetically Pleasing.

▶ LIGHTING DESIGN:

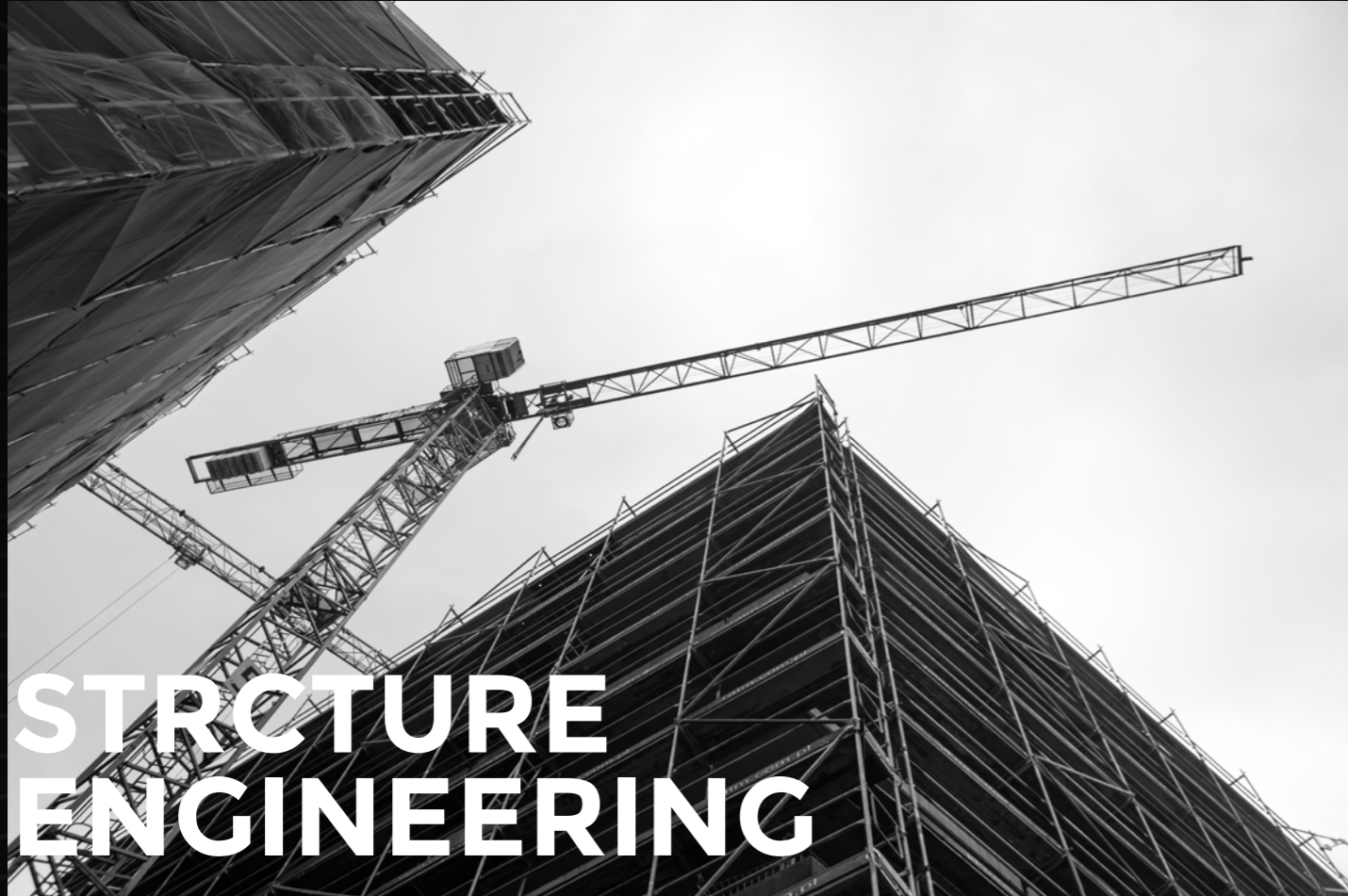
We create a Lighting Plan that Enhances the Atmosphere and Functionality of Your space.

▶ CUSTOM MILLWORK AND BUILT-INS:

We design and build custom Millwork and built-ins that meet your specific needs.

▶ CONSTRUCTION DOCUMENTATION:

We Prepare Detailed construction Documents that Ensure Your Project is Built to Your specifications.



STRUCTURE ENGINEERING

Our Structure Engineering Team provides a wide range of services to support your project, from site selection and feasibility studies to construction management and inspection.

We offer structural design, structural drafting, structural modeling, shop drawings, structural steel design & 4D Modelling in Structural Engineering Services with excellence.

■ **VISION:**

▶ **SITE SELECTION AND FEASIBILITY STUDIES:**

We help you identify the ideal site for your project and assess its feasibility.

▶ **STRUCTURAL ANALYSIS & DESIGN REPORTS**

▶ **RESIDENTIAL STRUCTURAL DESIGN**

▶ **INDUSTRIAL STRUCTURAL DESIGN**

▶ **BAR BENDING SCHEDULES**

▶ **STRUCTURAL STEEL DETAILING (SHOP DRAWING)**

▶ **PRE-STRESSED DETAILING**

▶ **WATER TANK DESIGN**

▶ **CONSTRUCTION MANAGEMENT AND INSPECTION:**

We oversee the construction process and ensure that your project is completed on time and on budget.

MECHANICAL ENGINEERING

HVAC, FIRE FIGHTING & PLUMBING

Zenith's Mechanical Engineering Team provides a comprehensive range of services to ensure your building is comfortable, safe, and efficient.

WE OFFER EXPERTISE IN:



► **HEATING, VENTILATION, AND AIR CONDITIONING (HVAC) SYSTEMS:**

We design and install HVAC systems that meet your application specific needs and optimize energy efficiency through sustainable design with compliance to international and local codes and standards.

► **SMOKE MANAGEMENT SYSTEMS :**

Design and installation in addition to creating a simulation if required to ensure life safety according to international and local code.

► **FIRE PROTECTION SYSTEMS:**

We design and install fire protection systems that comply with all applicable codes and standards.

► **PLUMBING SYSTEMS:**

We design and install plumbing systems that provide clean water and proper waste disposal.

► **PROVIDING HEATING SYSTEMS :**

using wall-mounted radiators and under floor heating. Design and construction of swimming pools in addition to design the main equipment room including pumps and filters served the pool.

► **ENERGY EFFICIENCY ASSESSMENTS:**

We can identify areas where you can save energy and improve the efficiency of your building systems.

► **BUILDING AUTOMATION SYSTEMS:**

We design and install building automation systems that can help you control your building systems remotely and optimize energy use.

ELECTRICAL ENGINEERING

A black and white photograph of a person's hands holding a tablet computer. The tablet screen displays a complex grid of data, likely an electrical schematic or software interface. The background is a server room with racks of equipment and glowing lights, creating a technical and professional atmosphere.

Our Electrical Engineering Team Has Extensive Experience in Designing and Installing Electrical systems for a wide range of Projects.

WE OFFER EXPERTISE IN:

▶ POWER DISTRIBUTION SYSTEMS:

We Design and Install Power Distribution systems that meet your specific Needs and Ensure your Building has the Power it Needs to operate safely and Efficiently.

▶ LIGHTING SYSTEMS:

We Design and Install Lighting systems that Provide the Right Amount of Light for Each area of your Building.

▶ COMMUNICATION SYSTEMS:

We Design and Install communication systems that meet your Needs, including Telephone, Data, and security systems.

▶ GROUNDING AND LIGHTNING PROTECTION SYSTEMS:

We Design and Install Grounding and Lightning Protection systems that protect your Building from Electrical Damage.

▶ ARC FLASH STUDIES:

We can perform arc Flash studies to identify potential Hazards and Recommend safety Measures.



BUILDING INFORMATION MODELING (BIM)

▶ ZENITH UTILIZES THE LATEST BIM TECHNOLOGY TO PROVIDE OUR CLIENTS WITH A MORE EFFICIENT AND COLLABORATIVE DESIGN AND CONSTRUCTION PROCESS.

▶ WE HAVE AN ENTIRE BIM TEAM WHO CAN ENSURE A BIM PROCESS THROUGH ALL PROJECT LIFE CYCLE FROM UNDERSTANDING EIR (EMPLOYER INFORMATION REQUIREMENTS) AND CREATING CONTRACTS REQUIRED SUCH AS BEPS.

▶ USING BIM SOFTWARES TO CREATE A 3D MODEL INCLUDING ALL THE INFORMATION REQUIRED, COORDINATION AND SHOP DRAWINGS AS PER SITE CONDITIONS TO FABRICATION AND FINAL ASBUILTS OF THE ASSET.

▶ AS WELL WE PROVIDE A SUSTAINABLE MODEL INTEGRATED AND PREPERAD FOR FACILITY MANAGEMENT LIFE CYCLE.

BIM ALLOWS US TO:

▶ **CREATE 3D MODELS OF YOUR PROJECT:**

These Models can be used for Design Visualization, clash Detection, and Construction sequencing.

▶ **SHARE INFORMATION WITH ALL PROJECT STAKEHOLDERS:**

This includes Architects, Engineers, contractors, and owners.

▶ **TRACK PROJECT PROGRESS AND IDENTIFY POTENTIAL ISSUES EARLY ON:**

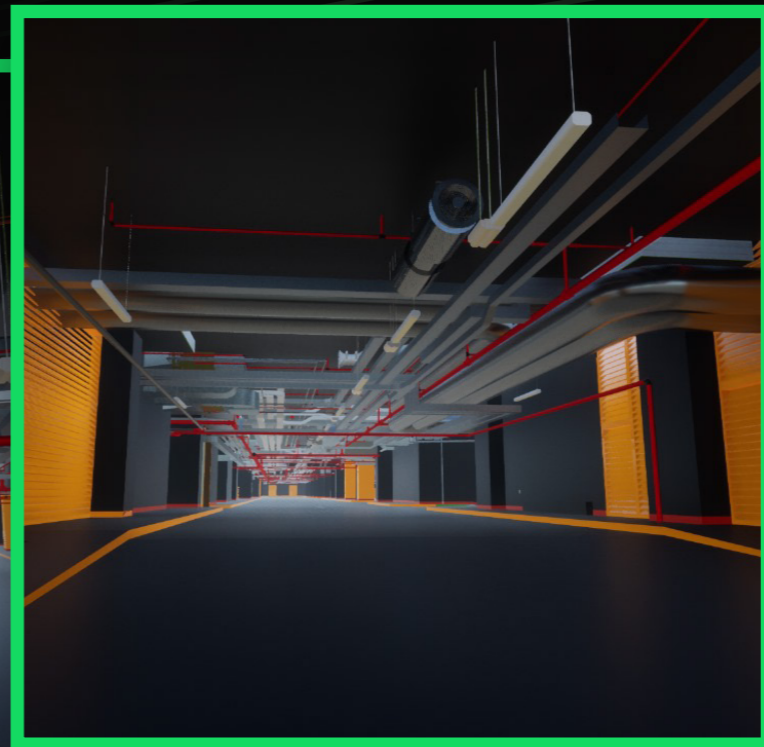
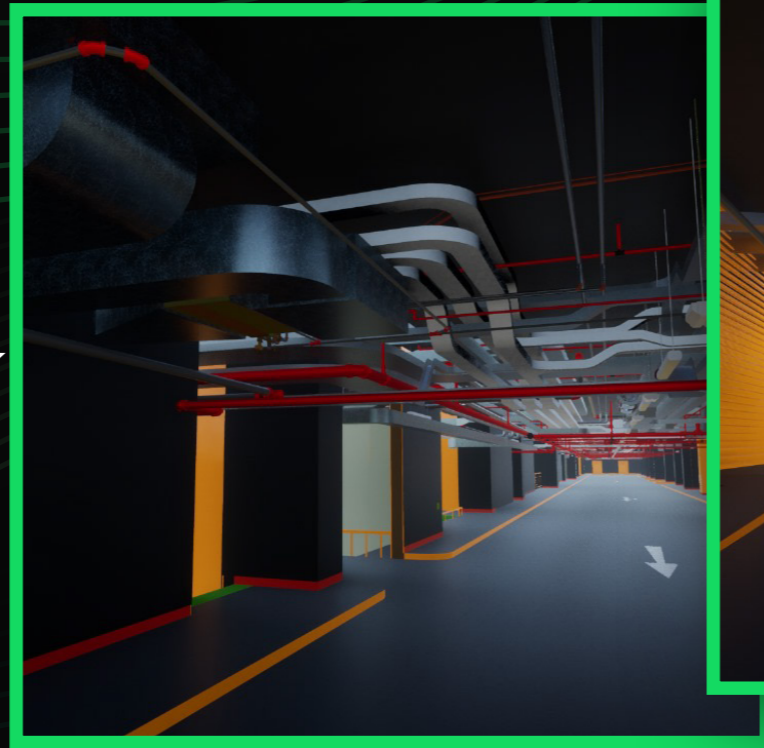
This Allows us to make changes quickly and avoid costly Delays.

▶ **REDUCE CONSTRUCTION WASTE AND IMPROVE SUSTAINABILITY:**

BIM can help us optimize material use and reduce construction waste.

OUR PROJECTS

MEP
WORK
COORDINATION

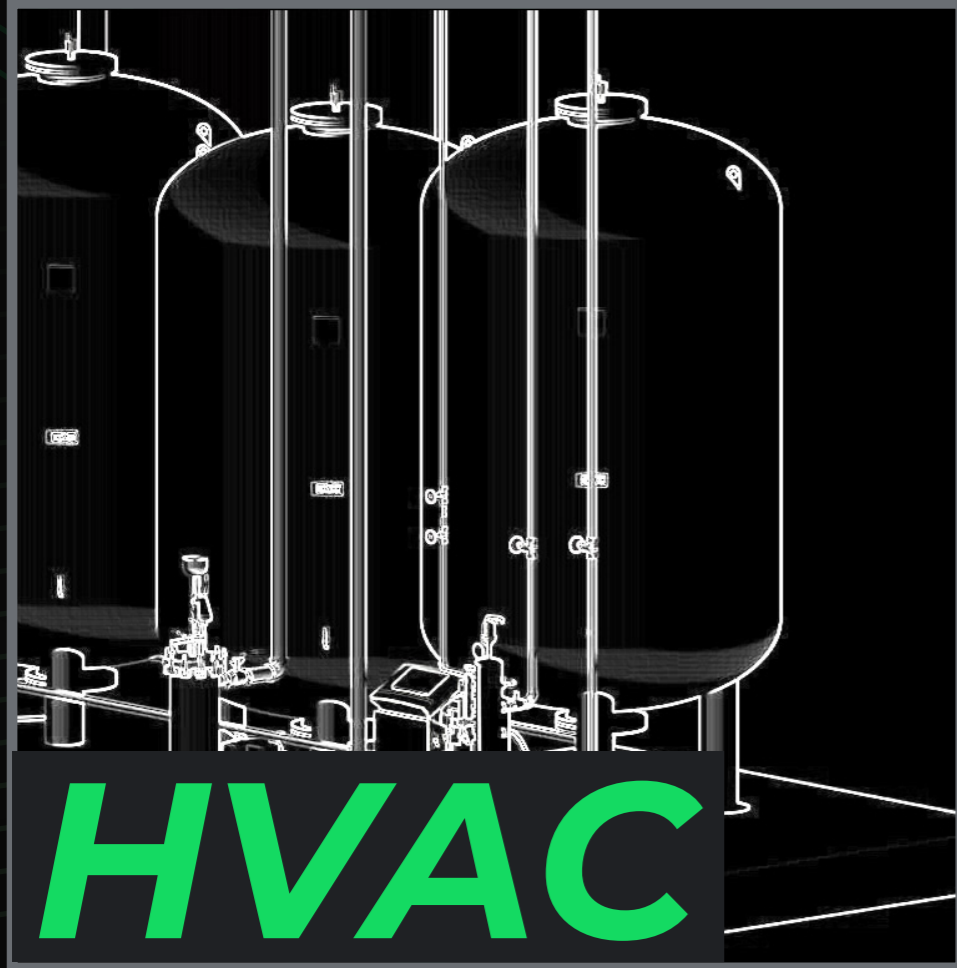




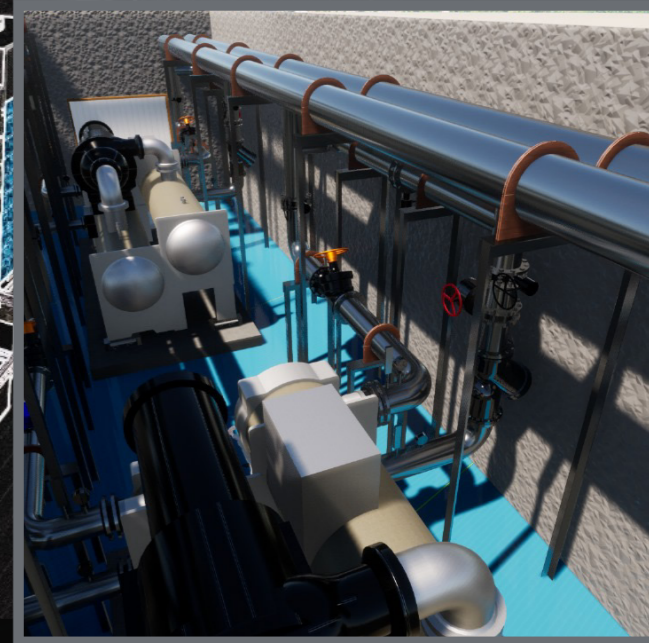
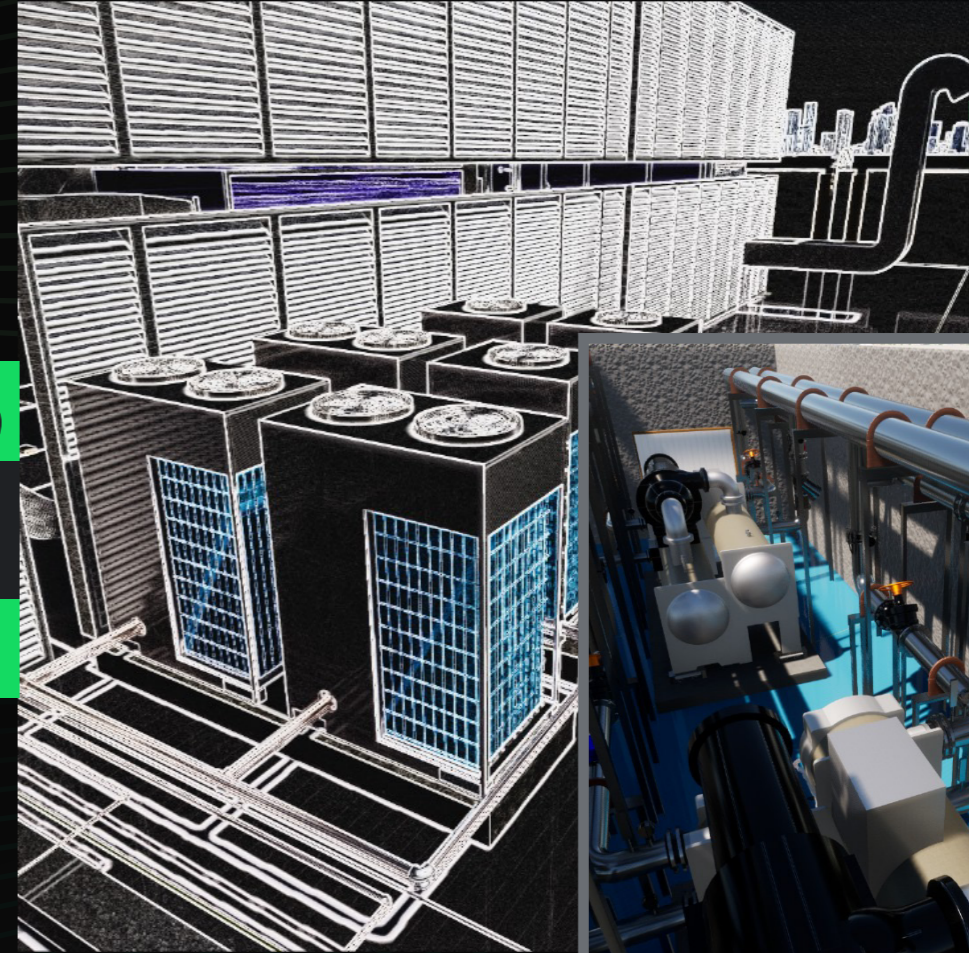
SUSTAINABILITY

At Zenith, we are committed to sustainable design and construction practices. Zenith is a trusted partner for clients who are looking for innovative, sustainable solutions for their engineering and design projects. We are committed to providing exceptional service and exceeding our client's expectations.

OUR PROJECTS



**WATER COOLED
CHILLERS
CENTRA PLANT**



OUR PROJECTS

INTERIOR
DESIGN



OUR PROJECTS



**INTERIOR
DESIGN**

THANK YOU

